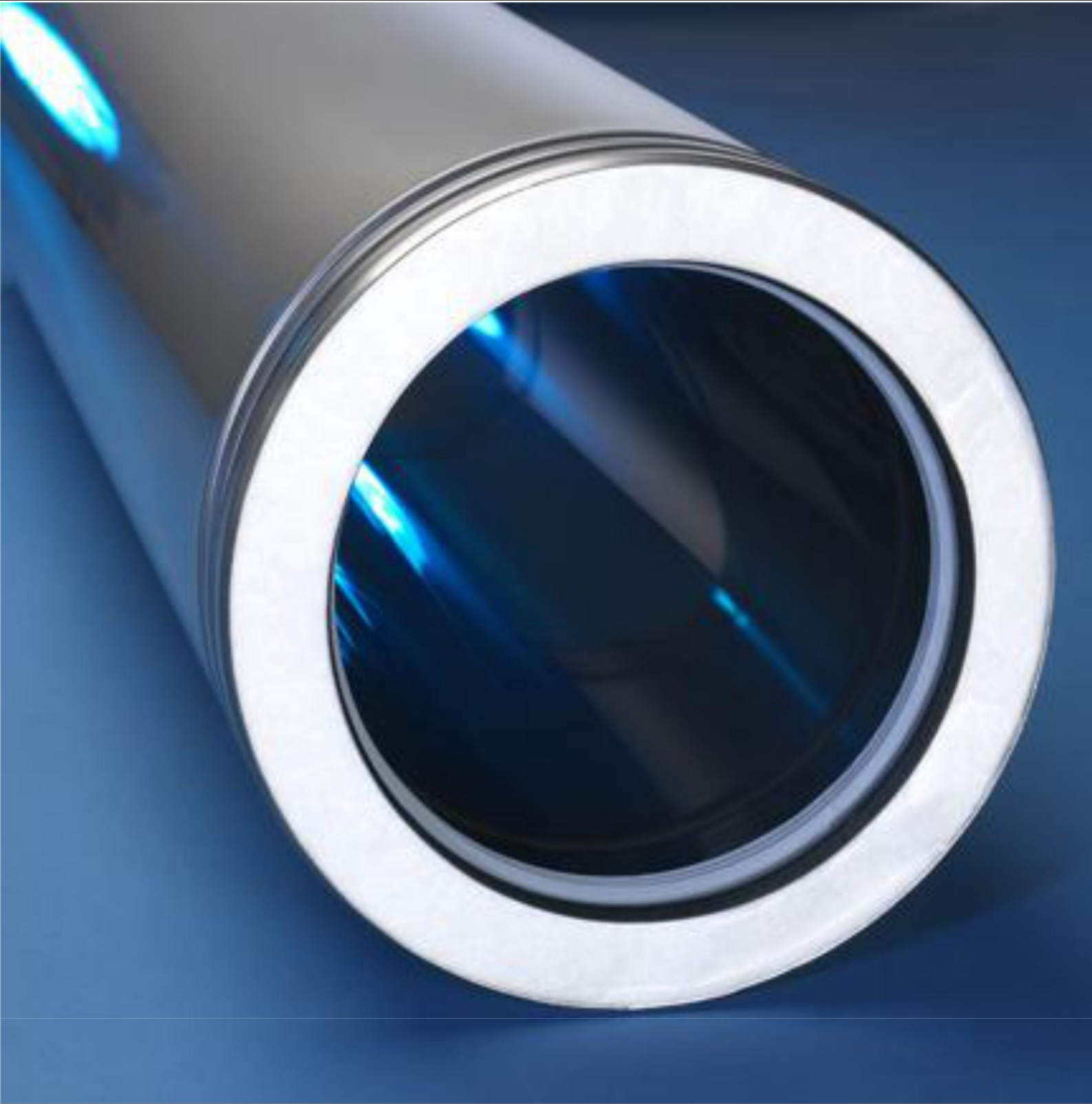




TEL: 0161 682 1999
FAX: 0161 681 9855
E-MAIL: sales@sigram.co.uk
WEB: www.sigram.co.uk

FLUE SYSTEMS MF



SYSTEM MF TWIN WALL



Technical Data SYSTEM MF

Application:	Chimney/Flue System
Operating Mode:	Dry/Wet
Pressure :	Negative/positive pressure
Max. working pressure:	5000Pa
Operating temperature:	600°C negative pressure 200°C positive pressure
Max. temperature allowed:	1000°C negative pressure (max 30 min.) 200°C positive pressure
Inner wall	material AISI 316L/EN 1.4404 thickness Ø 130 – Ø250: 0,4, Ø300 – Ø400: 0,5, Ø450: 0,6
Outer wall	material AISI 304L/EN 1.4301 thickness Ø 130 – Ø250: 0,4, Ø300 – Ø400: 0,5, Ø450: 0,6
Insulation	type Mineral Wool thickness Ø 130 – Ø400: 25mm Ø 450 – Ø600: 37.5mm
Thickness:	Ø80 - Ø600 (0.6)
Sealant:	Elastomer
Fuel Type:	Oil/Wood/Coal/Pellets normal (wood)

INSTALLATION NOTES SPECIFICALLY FOR CONDENSING APPLICATIONS.

On all condensing applications, system must be fitted with a minimum 3 degree slope back towards the appliance/s. (appliance and/or system drain point required at lowest point/s.)

Note: A system slope of 3 degrees equates to 5.2CM per linear metre.

Systems must be adequately supported, with horizontal run supports not exceeding two metre centres.

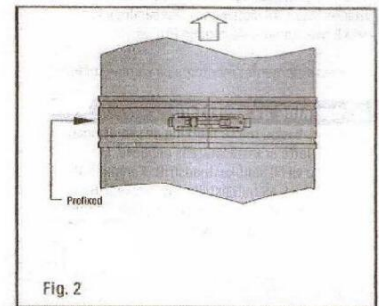
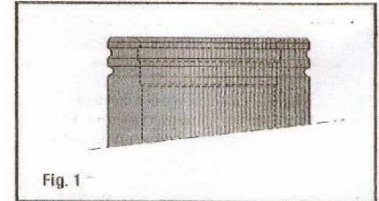
Applications SYSTEM MF

- Atmospheric gas-fired boilers
- Condensing boilers
- Wood-fired stoves
- Industrial ovens, large-scale establishments

Advantages SYSTEM MF

- Universal chimney/flue system
- Inner and outer wall from high quality stainless steel
- No thermal bridges, uninterrupted insulation from base plate to top stub
- Stress free thermal expansion
- Fast-build system without the need of sealants
- Compatible with SYSTEM ME
- High density and high quality insulation
- High temperature silicone sealing ring
- Lightweight elements
- Immediately ready for use
- Chimney fire resistant

Installation Method



Check all parts for possible damage.

During installation you may have to use our special installing grease.

The installation of the chimney starts at the appliance and then progresses upwards to the terminal.

The top of each element can be recognised by the profile edge (fig.1).

At the bottom of each section (MF 100) an arrow flow, is printed which indicates the direction of

Connect two elements by pushing them vertically into each other. For visual reasons it is advisable to place the welding seams at the rear if possible.

The sealing ring in the inner wall must remain in its position and must not be damaged during connection of the elements.

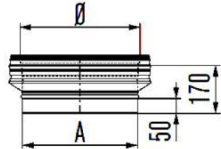
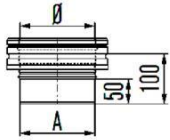
When the elements are connected then fix the locking band (fig. 2)

Then install the next element as instructed above.

	DIAMETER			CROSS SECTIONAL AREA						WEIGHT (KG/M)			
Inner Diameter mm	100	130	150	180	200	250	300	350	400	450	500	600	
Outer Diameter mm	150	180	200	230	250	300	350	400	450	525	575	675	
Cross Section (cm ²)	79	133	177	254	314	488	706	962	1256	1590	1963	2826	
Weight (kg/m)	6	7	8	9	10	12	16	19	21	26	28	34	

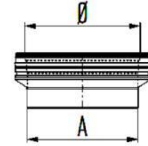
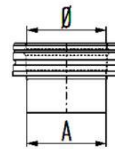
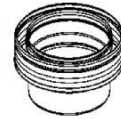
SYSTEM MF

MFA Adaptor ME



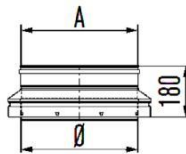
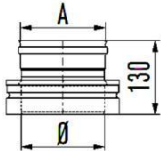
Ø	100	130	150	180	200	250	300	350	400	450	500	600
A	100	130	150	180	200	250	300	350	400	450	500	600

MFA 00 Adaptor, reducing, increasing



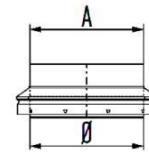
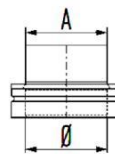
Ø	100	130	150	180	200	250	300	350	400	450	500	600
A	A to be specified on order											

MFAC Counter adaptor ME



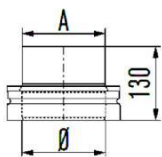
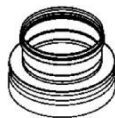
Ø	100	130	150	180	200	250	300	350	400	450	500	600
A	102	132	152	182	202	252	302	352	402	452	502	602

MFAC 00 Counter adaptor, reducing, increasing



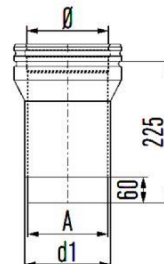
Ø	100	130	150	180	200	250	300	350	400	450	500	600
A	A to be specified on order											

MFACG Counter adaptor, smooth



Ø	100	130	150	180	200	250
A	99	129	149	179	199	249

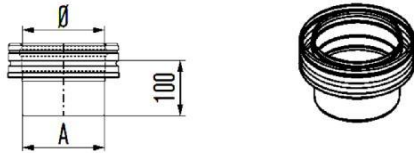
MFADD Adaptor double-double



Ø	130	150	180
A	129	149	179
d1	151	171	201

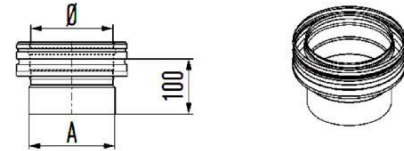
SYSTEM MF

MFAG
Adaptor EN



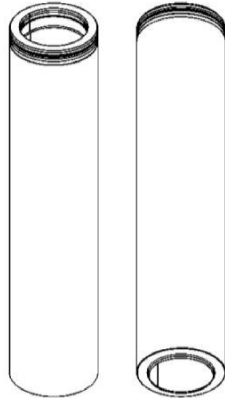
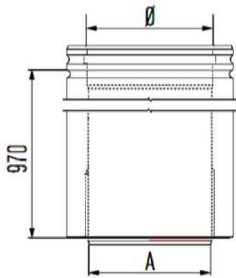
Ø	130	150	180	200	250	300	350	400
A	129	149	179	199	249	299	349	399

MFAGA
Adaptor, smooth increased (for negative pressure only)



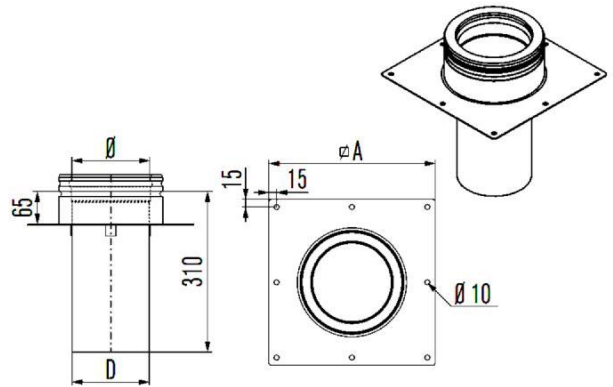
Ø	130	150	180	200
A	136	156	186	206

MFAL
Adaptor long EN



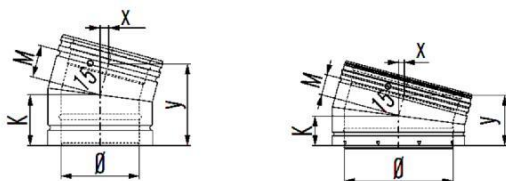
Ø	130	150	180	200	250
D1	127	147	177	197	247
D2	134	154	184	204	254

MFSA
Chimney connector (for negative pressure only)



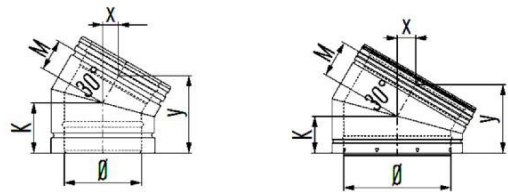
Ø	130	150	180	200	250	300	350	400
A	320	320	350	370	450	500	550	600
D	127	147	177	197	247	297	347	397

MFB 15
Elbow 15°



Ø	100	130	150	180	200	250	300	350	400	450	500	600
K	90	95	100	105	110	120	120	120	145	110	110	110
M	50	55	60	65	70	80	80	80	105	110	110	110
x	15	15	15	20	20	20	20	20	30	30	30	30
y	140	140	160	165	175	195	195	195	245	215	215	215

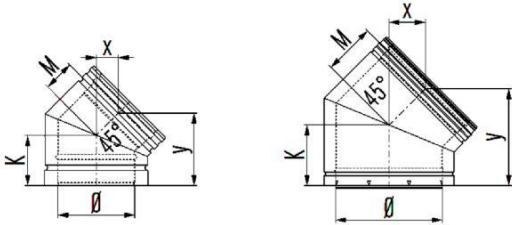
MFB 30
Elbow 30°



Ø	100	130	150	180	200	250	300	350	400	450	500	600
K	90	95	100	105	110	120	120	120	145	135	145	155
M	50	55	60	65	70	80	80	80	105	135	145	155
x	30	30	35	35	40	45	45	45	55	70	75	80
y	135	140	150	160	170	190	190	190	235	255	270	290

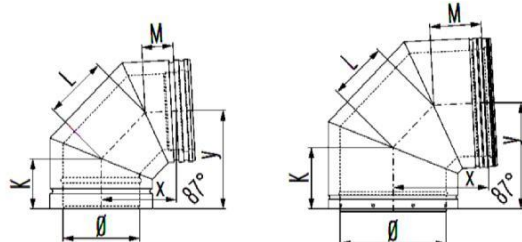
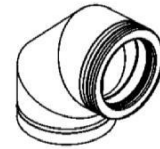
SYSTEM MF

MFB 45
Elbow 45°



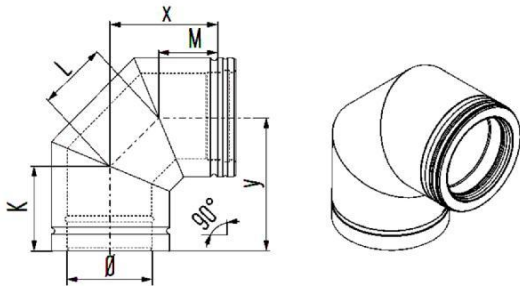
Ø	100	130	150	180	200	250	300	350	400	450	500	600
K	90	95	100	105	110	120	145	145	155	175	185	205
M	50	55	60	65	70	80	105	105	115	175	185	205
x	40	40	45	50	50	60	75	75	90	125	130	145
y	125	135	140	150	160	175	220	220	235	300	315	350

MFB 87
Elbow 87°



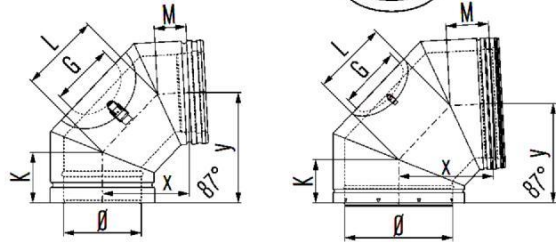
Ø	100	130	150	180	200	250	300	350	400	450	500	600
K	85	90	95	100	105	115	140	145	155	175	185	205
L	105	115	125	135	145	165	185	205	225	300	320	365
M	55	60	60	65	75	80	110	115	115	175	185	205
x	125	140	150	160	175	200	240	250	275	385	410	465
y	160	170	185	195	210	230	270	290	310	385	410	465

MFB 90
Elbow 90°



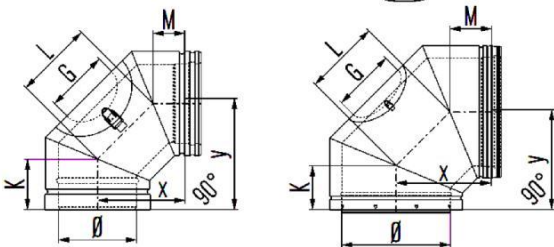
Ø	100	130	150	180	200	250	300	350	400
K	90	95	100	105	110	120	145	145	155
L	105	115	125	140	145	165	185	205	225
M	50	55	60	65	70	80	105	105	115
x	125	135	150	165	175	200	235	250	275
y	165	175	190	205	215	235	275	290	315

MFB187
Elbow 87° with inspection cover



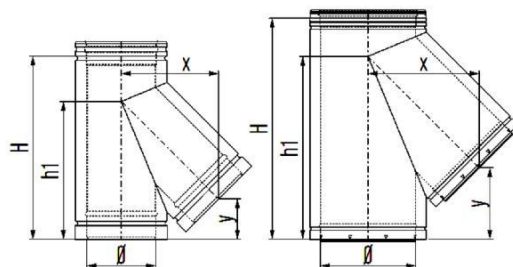
Ø	100	130	150	180	200	250	300	350	400	450	500	600
G	100	130	190	190	140	180	180	180	240	240	240	240
K	85	90	95	100	110	115	140	145	150	175	185	210
L	130	160	155	140	145	165	185	200	220	300	320	370
M	55	55	60	70	70	80	110	110	120	175	185	205
x	145	170	170	170	170	195	240	250	275	385	410	465
y	175	205	205	200	215	230	270	290	310	385	410	465

MFB190
Elbow 90° with inspection cover



Ø	100	130	150	180	200	250	300	350	400	450	500	600
G	100	130	190	190	140	180	180	180	240	240	240	240
K	85	90	95	100	110	115	140	145	150	175	185	210
L	130	160	155	140	145	165	185	200	220	300	320	370
M	55	55	60	70	70	80	110	110	120	175	185	205
x	145	170	170	170	170	195	240	250	275	385	410	465
y	175	205	205	200	215	230	275	285	305	385	410	465

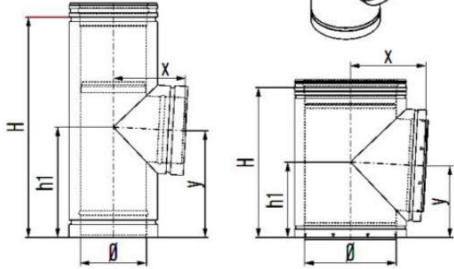
MFT 45
Tee-piece 45°



Ø	130	150	180	200	250	300	350	400	450	500	600
H	400	400	450	500	600	700	750	850	1010	1010	1150
h1	300	300	335	375	450	525	560	625	830	820	950
x	195	215	240	255	300	340	385	425	490	530	620
y	105	85	100	120	150	185	180	200	340	290	380

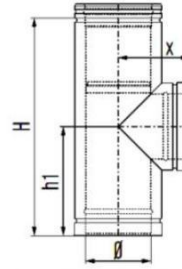
SYSTEM MF

MFT 87
Tee-piece 87°



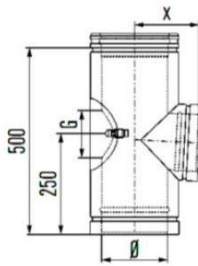
Ø	100	130	150	180	200	250	300	350	400	450	500	600
H	500	500	500	500	500	500	500	600	650	700	800	1000
h1	250	250	250	250	250	250	250	300	350	350	400	500
x	125	140	150	165	180	205	230	260	285	330	360	410
y	245	245	245	245	235	245	235	345	345	340	390	490

MFT 90
Tee-piece 90°



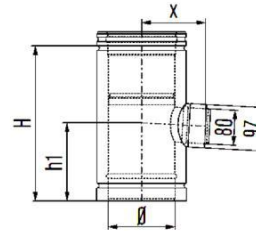
Ø	100	130	150	180	200	250	300	350	400
H	500	500	500	500	500	500	500	600	650
h1	250	250	250	250	250	250	250	300	350
x	125	145	155	170	180	205	235	260	285

MFTI 87
Tee-piece 87° with inspection cover



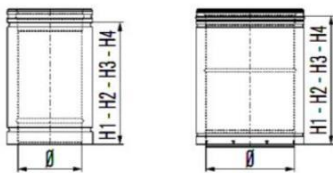
Ø	130	150	180	200	250
G	100	140	140	140	180
x	150	165	175	190	215

MFTV08
Reducing tee-piece MF-UE 87°



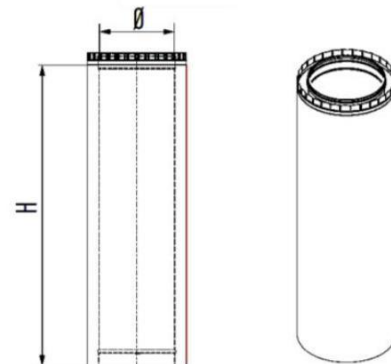
Ø	100	130	150	180	200	250
H	300	300	350	350	400	450
h1	150	150	175	175	200	225
x	120	135	145	160	165	190

MF100/50/25/10
Length



Ø	100	130	150	180	200	250	300	350	400	450	500	600
H1	965	965	965	965	965	965	965	965	965	965	965	965
H2	500	500	500	500	500	500	500	500	500	500	500	500
H3	250	250	250	250	250	250	250	250	250	250	250	250
H4	100	100	100	100	100	100	100	100	100	100	100	100

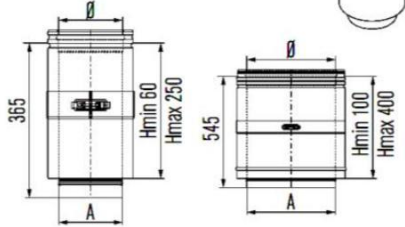
MF Design
Length



Ø	100	130	150	180	200	250	300	350	400	450	500	600
H	965	965	965	965	965	965	965	965	965	965	965	965

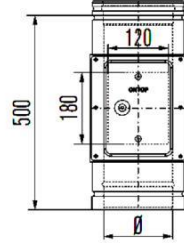
SYSTEM MF

MFPP
Adjustable length



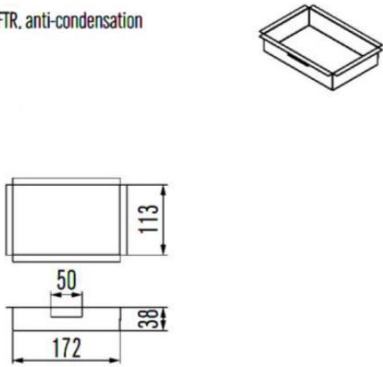
Ø	100	130	150	180	200	250	300	350	400	450	500	600
A	97	127	147	177	197	247	297	347	397	445	495	595
Lmin	60	60	60	60	60	60	60	60	60	100	100	100
Lmax	250	250	250	250	250	250	250	250	250	400	400	400

MFTR
Inspection length



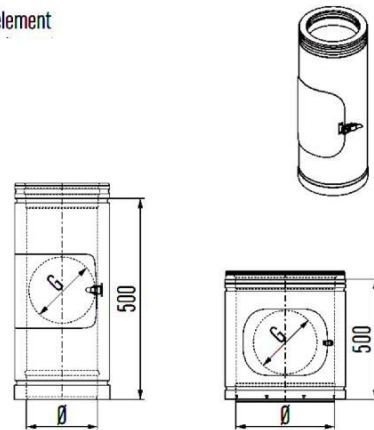
Ø	130	150	180	200	250	300	350	400
---	-----	-----	-----	-----	-----	-----	-----	-----

MFTK
End cap for MFTR, anti-condensation



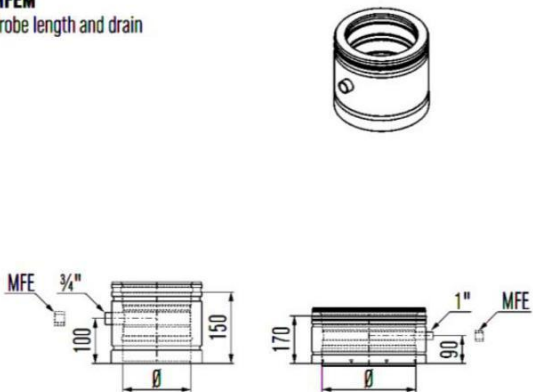
Ø	130	150	180	200	250	300	350	400
---	-----	-----	-----	-----	-----	-----	-----	-----

MFI
Inspection element



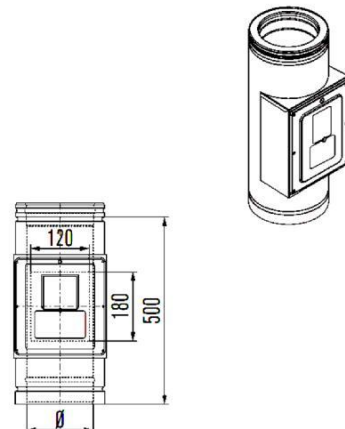
Ø	100	130	150	180	200	250	300	350	400	450	500	600
G	100	130	140	140	140	180	180	180	240	240	240	240

MFEM
Probe length and drain



Ø	100	130	150	180	200	250	300	350	400	450	500	600
---	-----	-----	-----	-----	-----	-----	-----	-----	-----	-----	-----	-----

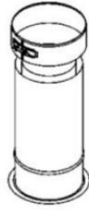
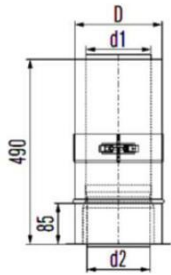
MFNL
Draught stabilizer



Ø	130	150	180	200	250	300	350	400
---	-----	-----	-----	-----	-----	-----	-----	-----

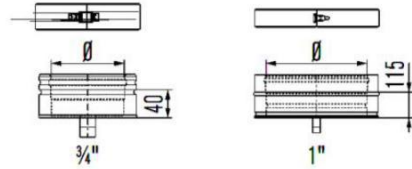
SYSTEM MF

MFPR
Ceiling / wall connector



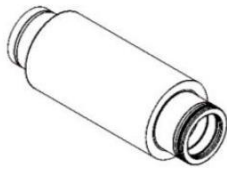
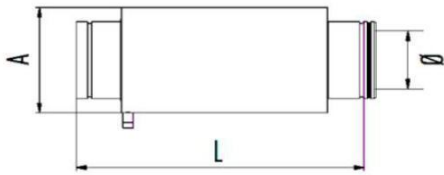
∅	130	150	180	200
d	126	146	176	196
d2	123	143	173	193
D	184	204	234	254

MFRBK
Condensate collector with drain



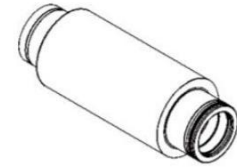
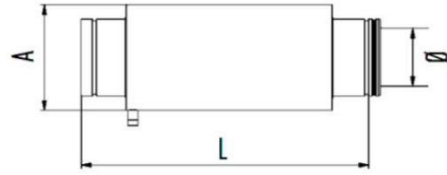
∅	100	130	150	180	200	250	300	350	400	450	500	600
---	-----	-----	-----	-----	-----	-----	-----	-----	-----	-----	-----	-----

MFSIA1
Absorption silencer 25 dB



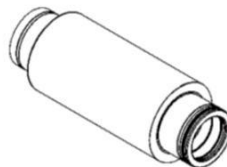
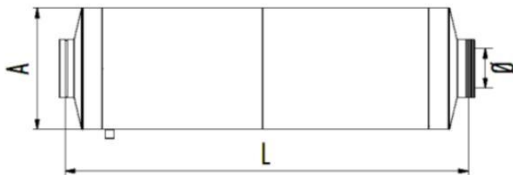
∅	100	130	150	180	200	250	300	350	400	450	500	600
L	600	750	750	1000	1250	1250	1750	1750	1750	2000	2000	2000
A	225	255	275	305	325	375	425	475	525	575	625	725

MFSIA2
Absorption silencer 35 dB



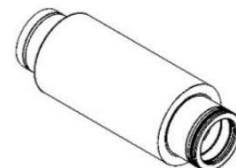
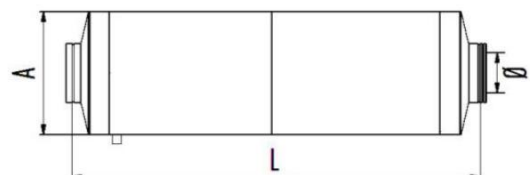
∅	100	130	150	180	200	250	300	350	400	450	500	600
L	1000	1000	1000	1250	1500	1500	2500	2500	2500	3000	3000	3000
A	225	255	275	325	325	375	425	475	525	575	625	725

MFSIR1
Resonance silencer 20 dB



∅	100	130	150	180	200	250	300	350	400	450	500	600
L	2200	2200	2200	2200	2200	2200	2200	2200	2200	2200	2200	2200
A	400	450	500	600	650	700	850	950	1000	1100	1150	1350

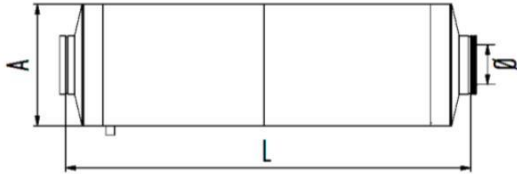
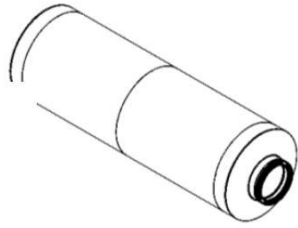
MFSIR2
Resonance silencer 30 dB



∅	100	130	150	180	200	250	300	350	400	450	500	600
L	2200	2200	2200	2200	2200	2400	2600	2800	3000	3200	3400	3600
A	550	650	750	800	850	1000	1000	1100	1200	1300	1350	1550

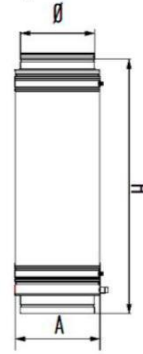
SYSTEM MF

MFSIC1
Combination silencer 25 dB



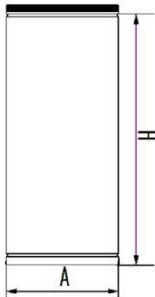
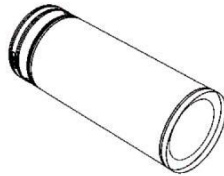
∅	100	130	150	180	200	250	300	350	400	450	500	600
L	1870	1870	1870	2120	2370	2620	3120	3370	3870	4370	4620	4870
A	400	500	525	575	625	675	875	975	1050	1100	1225	1325

MFSI A
Absorption silencer



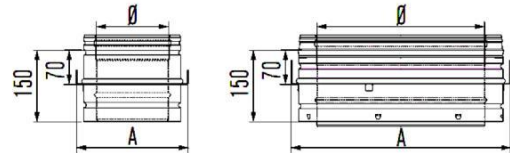
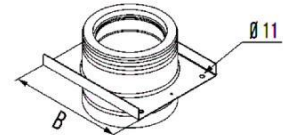
∅	100	130	150	180	200	250	300	350	400	450	500	600
H	620	620	620	800	800	800	1160	on request				
A	200	230	250	280	300	350	400	on request				

MFSI AE
Extension set for MFSI A



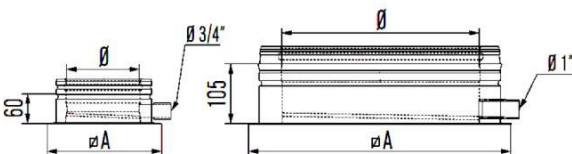
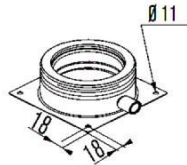
∅	100	130	150	180	200	250	300	350	400	450	500	600
L	390	390	390	570	570	570	930	on request				
A	200	230	250	280	300	350	400	on request				

MFAPO
Wall support element



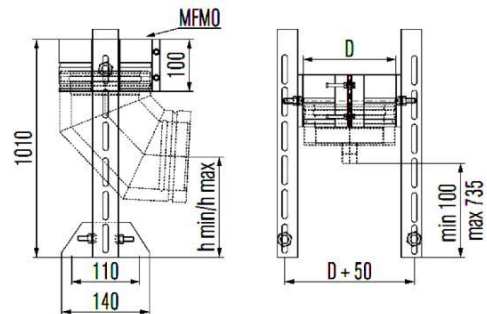
∅	100	130	150	180	200	250	300	350	400	450	500	600
A	185	215	235	265	275	335	385	435	485	560	610	710
B	235	265	285	315	335	385	435	485	535	610	660	760

MFAPU
Rotating base plate with condensate drain



∅	100	130	150	180	200	250	300	350	400	450	500	600
A	185	215	235	265	285	335	385	435	485	560	610	710

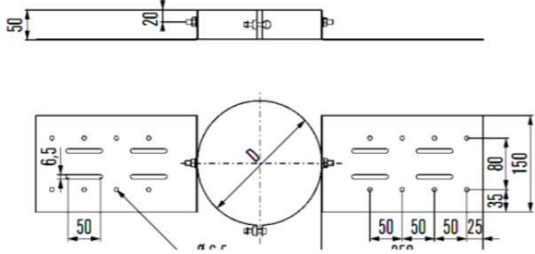
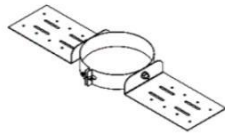
MFBS
Elbow support (incl. MFMD)



∅	130	150	180	200	250	350
D	180	200	230	250	300	400
Hmin	100	110	125	135	160	210
Hmax	750	735	725	710	690	630

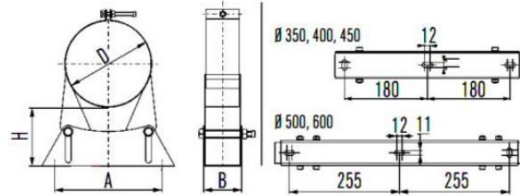
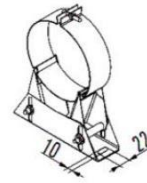
SYSTEM MF

MFDD Roof support



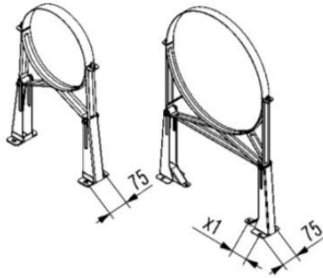
Ø	100	130	150	180	200	250	300	350	400	450	500	600
D	150	180	200	230	250	300	350	400	450	525	575	675

MFMB Wall band adjustable

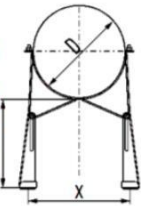


Ø	100	130	150	180	200	250	300	350	400	450	500	600
D	150	180	200	230	250	300	350	400	450	525	575	675
x	160	160	160	160	160	160	160	360	360	360	510	510
b	55	55	55	55	55	55	55	60	60	60	60	60
h1	50-90	50-90	50-90	50-90	50-90	50-90	50-90	50-90	50-90	50-90	50-90	50-90

MFMBV2, MFMBV3, MFMBV4 Wall band adjustable



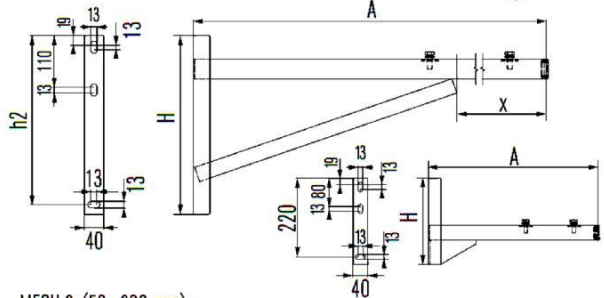
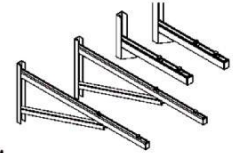
MFMBV2 90 - 200
MFMBV3 190 - 300
MFMBV4 290 - 400



MFMBV2/3/4

Ø	100	130	150	180	200	250	300	350	400	450	500	600
D	150	180	200	230	250	300	350	400	450	525	575	675
x	180	210	230	260	280	330	380	430	480	535	585	685
x1	MFMBV2	-	-	-	-	-	-	-	-	-	70	70
	MFMBV3	-	-	-	-	-	-	-	-	-	110	110
	MFMBV4	-	-	-	-	-	-	-	-	-	105	105

MFOH 2 / MFOH 4 Support heavy (pair) for MFAPO/MFAPU



MFOH 2 (50 - 200 mm)

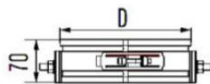
Ø	100	130	150	180	200	250	300	350	400	450	500	600
A	475	475	475	475	600	600	600	740	740	740	915	915
H	240	240	240	240	330	330	330	330	330	330	380	380
h2	-	-	-	-	310	310	310	310	310	310	360	360
x	-	-	-	-	270	270	270	330	330	330	355	355

MFOH 4 (200 - 400 mm)

Ø	100	130	150	180	200	250	300	350	400	450	500	600
A	600	600	740	740	740	740	915	915	915	1090	1090	1090
H	330	330	330	330	330	330	380	380	380	430	430	430
h2	310	310	310	310	310	310	360	360	360	410	410	410
x	270	270	330	330	330	330	355	355	355	350	350	350

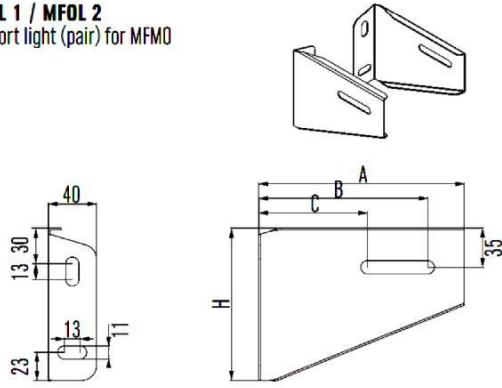
x = Max. distance to cut

MFMO Band for wall support



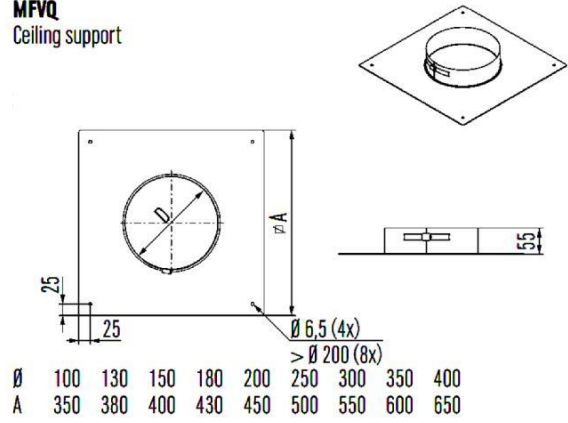
Ø	100	130	150	180	200	250
D	150	180	200	230	250	300

MFOL 1 / MFOL 2
Support light (pair) for MFMO



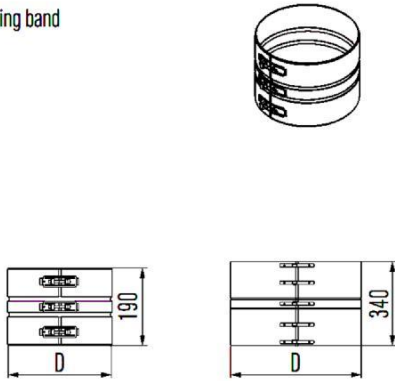
MFOL 1 (50 - 90 mm)						MFOL 2 (90 - 200 mm)							
Ø	100	130	150	180	200	250	Ø	100	130	150	180	200	250
A	220	220	220	285	285	285	A	315	335	335	345	370	395
B	190	190	190	255	255	255	B	285	305	305	315	340	365
C	125	125	125	130	130	130	C	165	180	180	200	215	240
H	170	170	170	230	230	230	H	255	275	275	285	305	325

MFVQ
Ceiling support



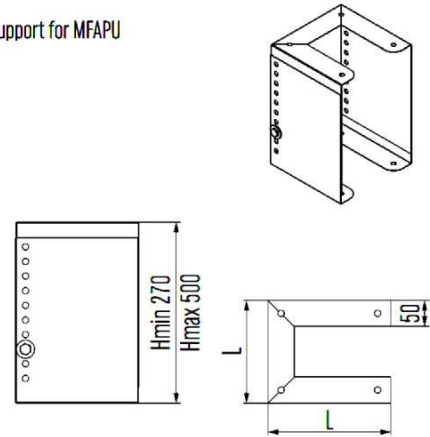
Ø	100	130	150	180	200	250	300	350	400
A	350	380	400	430	450	500	550	600	650

MFSK
Reinforced locking band



Ø	100	130	150	180	200	250	300	350	400	450	500	600
D	150	180	200	230	250	300	350	400	450	525	575	675

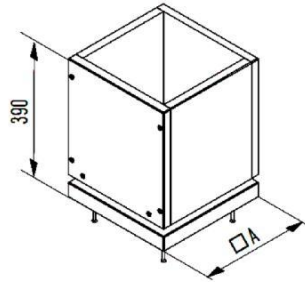
MFTS
Telescopic support for MFAPU



Ø	100	130	150	180	200	250	300	350	400	450	500	600
L	200	230	250	280	300	350	400	450	500	575	625	725

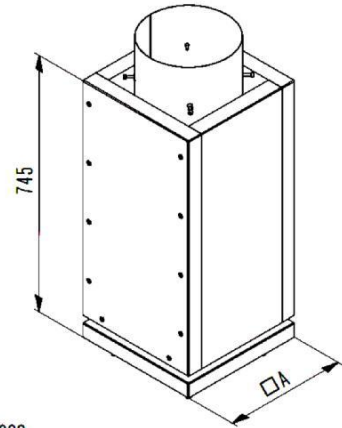
SYSTEM MF

MFIBBL
Standard block low



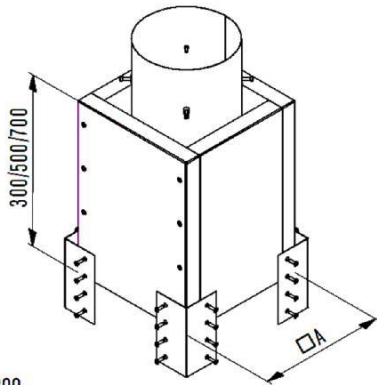
∅	130	150	180	200
A	325	325	325	375

MFIBBH
Standard block high



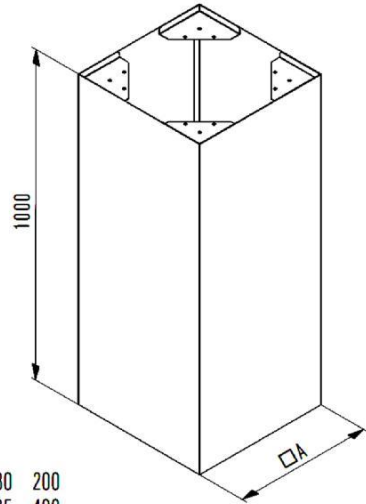
∅	130	150	180	200
A	325	365	365	430

MFIB
Extension set for MFIBBH



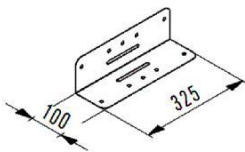
∅	130	150	180	200
A	325	365	365	430

MFIBMT black
Casing, resizable

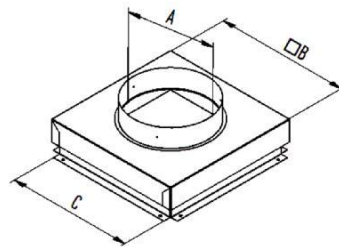


∅	130	150	180	200
A	385	425	425	490

MFIBMH
Mounting aid (2 pcs)



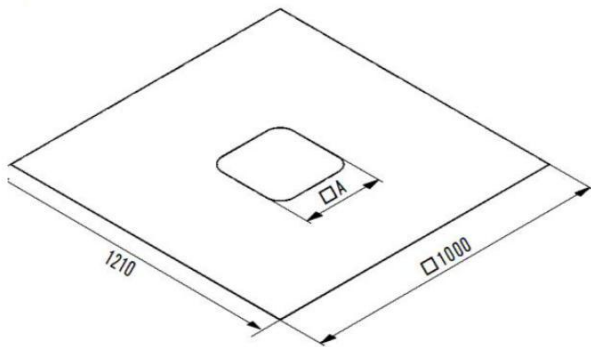
MFIBVQL
Ceiling support for ATIBBL



∅	130	150	180	200
A	185	205	235	255
B	415	455	455	520
C	385	425	425	490

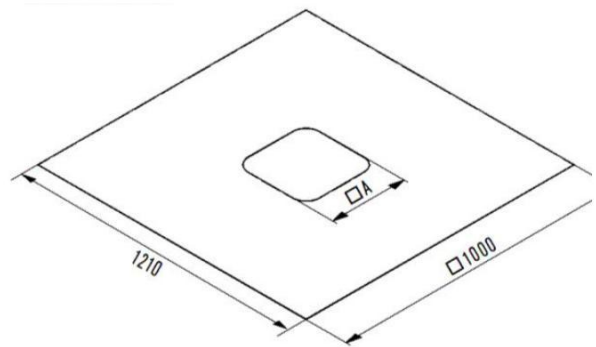
SYSTEM MF

MFIBMD
Moisture-retarding seal



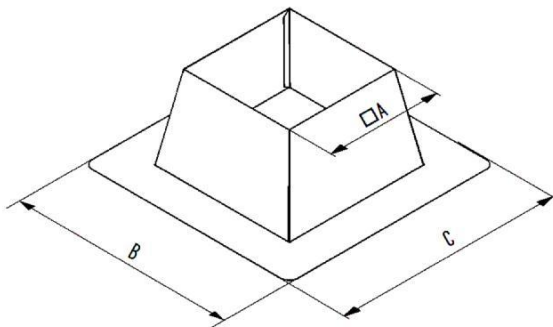
Ø	130	150	180	200
A	265	265	330	330

MFIBMR
Rain retaining seal



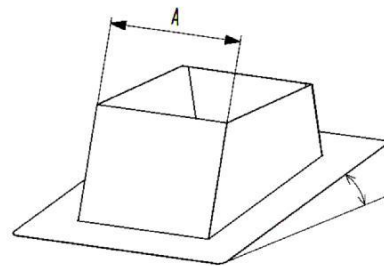
Ø	130	150	180	200
A	265	265	330	330

MFIBP10
Roof flashing 0°-10°



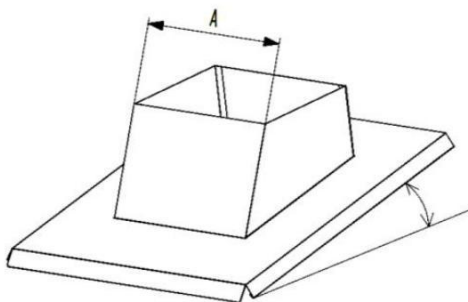
Ø	130	150	180	200
A	325	365	365	430

MFIBP30
Slope roof flashing 10°-30°



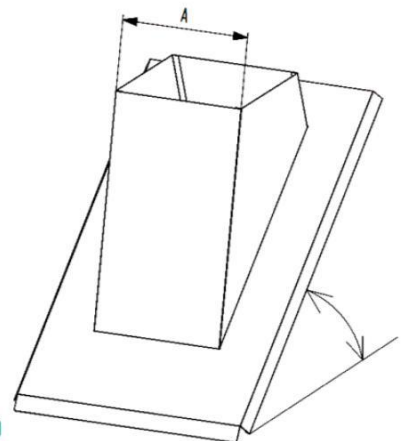
Ø	130	150	180	200
A	325	365	365	430

MFIBD30
Roof flashing 10°-30° corrugated roofing



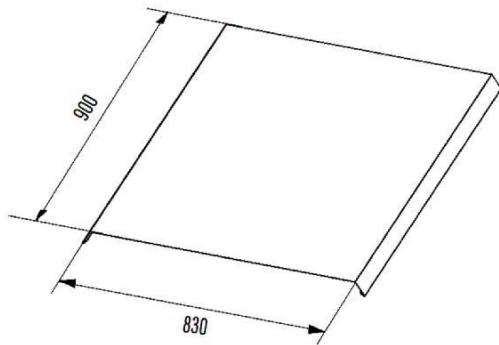
Ø	130	150	180	200
A	325	365	365	430

MFIBD50
Roof flashing 25°-50° corrugated roofing

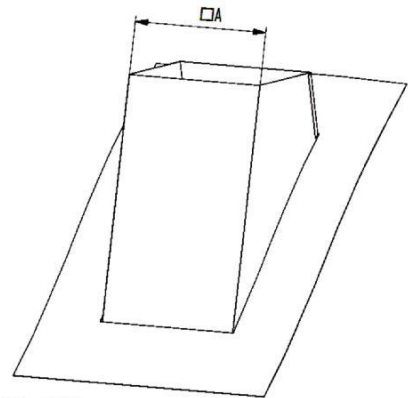


Ø	130	150	180	200
A	325	365	365	430

MFIBDV
Extension roof flashing

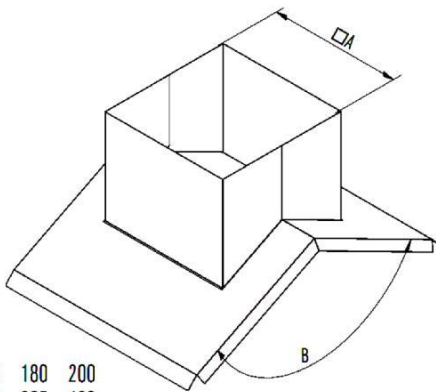


MFIBLS
Lead slope roof flashing 30° - 50°



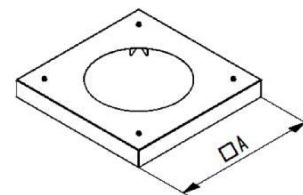
Ø	130	150	180	200
A	355	395	395	460

MFIBPN
Roof flashing ridge 30°-50°



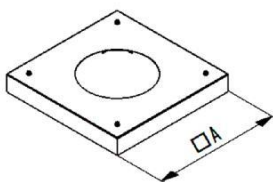
Ø	130	150	180	200
A	325	365	365	430
B	to be specified on order			

MFIBVH
Ventilation plate for MFIBBH



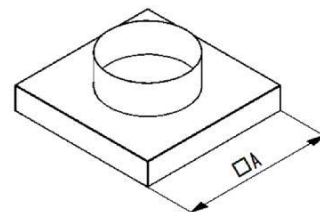
Ø	130	150	180	200
A	375	415	415	480

MFIBVL
Ventilation plate for MFIBBL



Ø	130	150	180	200
A	375	375	375	425

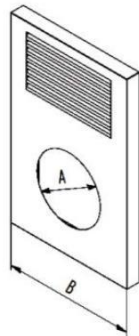
MFIBVR black
Rain retaining ventilation plate



Ø	130	150	180	200
A	455	455	455	520

MFIBWP

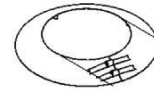
Ventilation plate wall penetration



∅	130	150	180	200
A	185	205	235	255
B	235	275	275	355

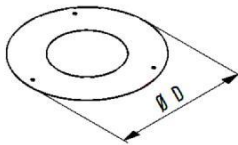
MFIBS

Storm collar Iso-block



MFIBR

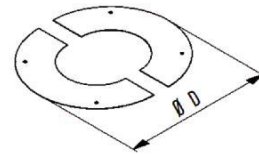
Rosette



∅	130	150	180	200
D	380	400	430	450

MFIBR2

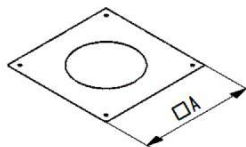
Rosette 2 parts



∅	130	150	180	200
D	380	400	430	450

MFIBAPH

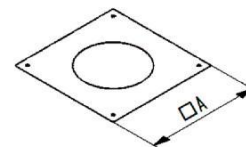
Square finish, high block



∅	130	150	180	200
A	355	355	420	420

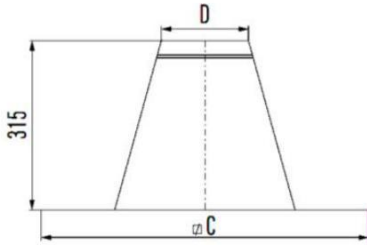
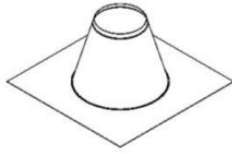
MFIBAPL

Square finish, low block



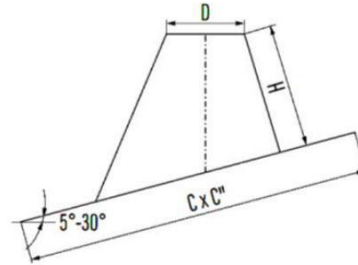
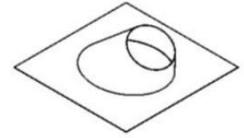
∅	130	150	180	200
A	315	315	365	365

MFDP
Flat roof flashing



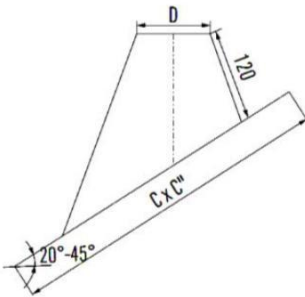
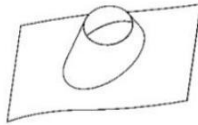
	100	130	150	180	200	250	300	350	400	450		
Ø	100	130	150	180	200	250	300	350	400	450	500	600
A	160	190	210	240	260	310	360	410	460	535	585	685
C	440	470	490	520	540	590	640	690	740	815	865	965

MFDH
Slope roof flashing 5°- 30°



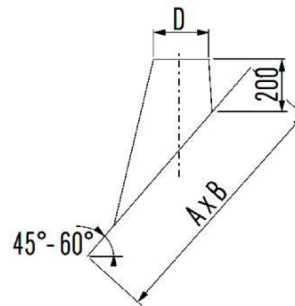
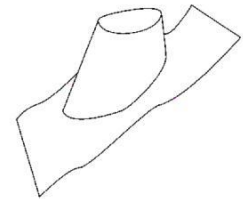
Ø	100	130	150	180	200	250	300	350	400	450	500	600
A	155	185	205	235	255	305	355	405	455	530	580	680
C	520	550	575	605	630	685	740	795	850	935	990	1100
C'	500	530	550	580	600	655	705	760	810	890	940	1045
H	155	160	160	165	170	175	185	195	200	215	220	235

MFLS
Lead slope roof flashing 20°- 45°



Ø	100	130	150	180	200	250	300	350	400	450	500	600
A	160	190	210	240	260	310	360	410	460	535	585	685
C	750	750	750	750	750	750	750	750	1000	1100	1200	1300
C'	750	1000	1000	1000	1000	1000	1000	1000	1200	1200	1300	1400

MFLE
Lead slope roof flashing 45°-60°

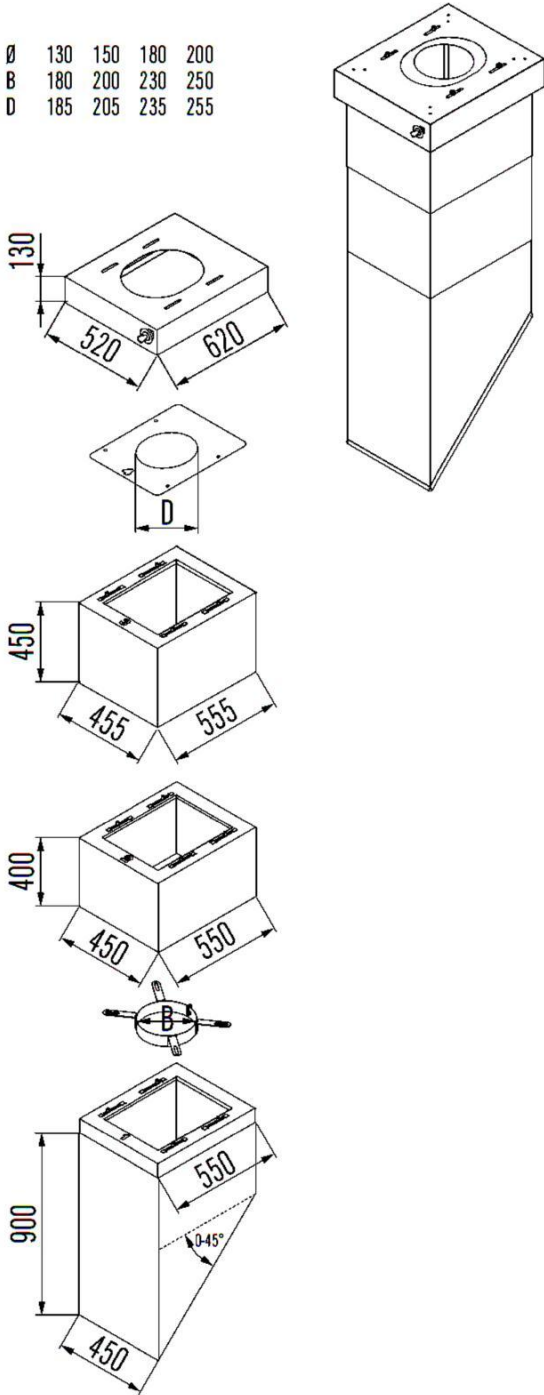


Ø	130	150	180	200	250
D	215	235	265	285	335
A	750	750	750	1000	1000
B	1000	1000	1100	1200	1300

MFTOP

Modular chimney cover incl. mounting set

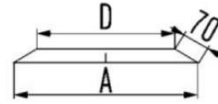
Ø	130	150	180	200
B	180	200	230	250
D	185	205	235	255



Also available in black

MFS

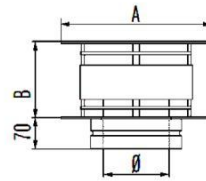
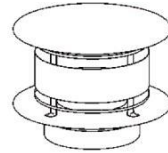
Storm collar



Ø	100	130	150	180	200	250	300	350	400	450	500	600
A	275	305	325	355	375	425	475	525	575	650	700	800
D	150	180	200	230	250	300	350	400	450	525	575	675

MFK

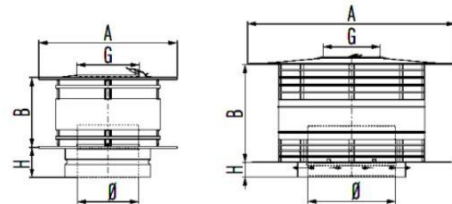
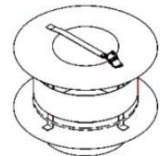
All weather cap



Ø	100	130	150	180	200	250	300	350	400
A	220	285	330	395	440	550	660	770	880
B	110	145	165	200	220	275	330	385	440

MFKR

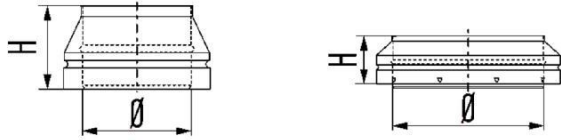
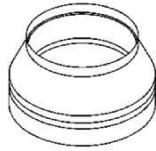
All weather cap with inspection



Ø	100	130	150	180	200	250	300	350	400	450	500	600
A	220	285	330	395	440	550	660	770	880	890	990	1190
B	110	145	165	200	220	275	330	385	440	435	490	590
H	70	70	70	70	70	70	70	70	70	65	65	65
G	100	130	150	180	200	250	250	250	250	250	250	250

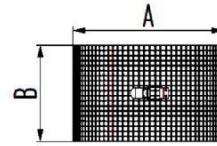
SYSTEM MF

MFMA
Top stub



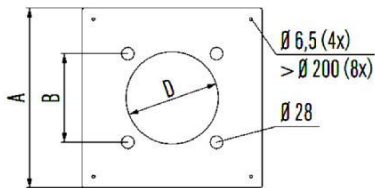
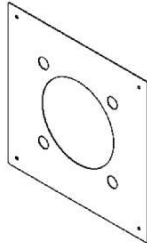
Ø	100	130	150	180	200	250	300	350	400	450	500	600
H	115	115	115	115	115	115	115	115	115	100	100	100

MFW
Spark arrester mesh



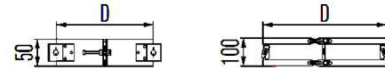
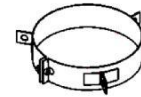
Ø	130	150	180
A	208	240	288
B	136	160	192

MFBS
Fire stop spacer



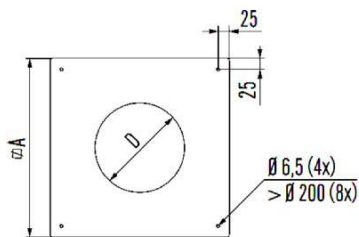
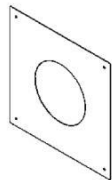
Ø	100	130	150	180	200	250	300	350	400
A	350	380	400	430	450	500	550	600	650
B	147	177	197	227	247	297	347	397	447
D	155	185	205	235	255	305	355	405	455

MFBT
Guy-wire band



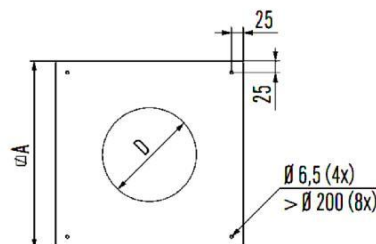
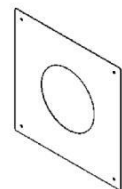
Ø	100	130	150	180	200	250	300	350	400	450	500	600
D	150	180	200	230	250	300	350	400	450	525	575	675

MFMP2
Wall cover 2mm



Ø	150	250
A	400	500
D	205	305

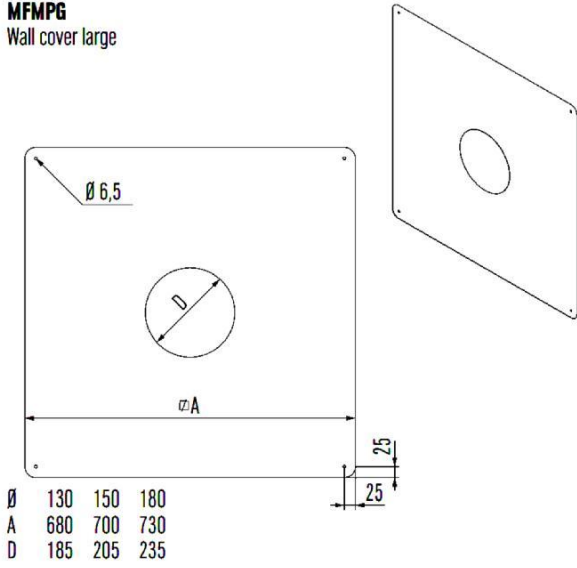
MFMP
Wall cover



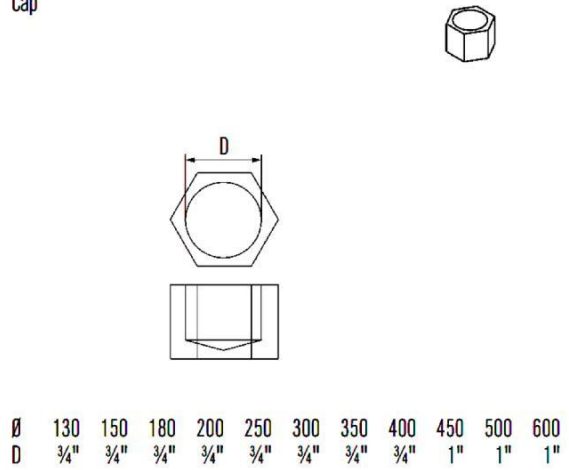
Ø	100	130	150	180	200	250	300	350	400	450	500	600
A	350	380	400	430	450	500	550	600	650	725	775	875
D	155	185	205	235	255	305	355	405	455	530	580	680

SYSTEM MF

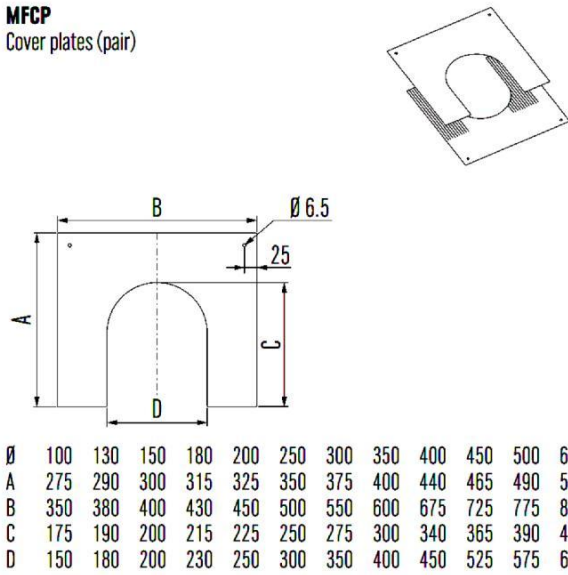
MFMP6
Wall cover large



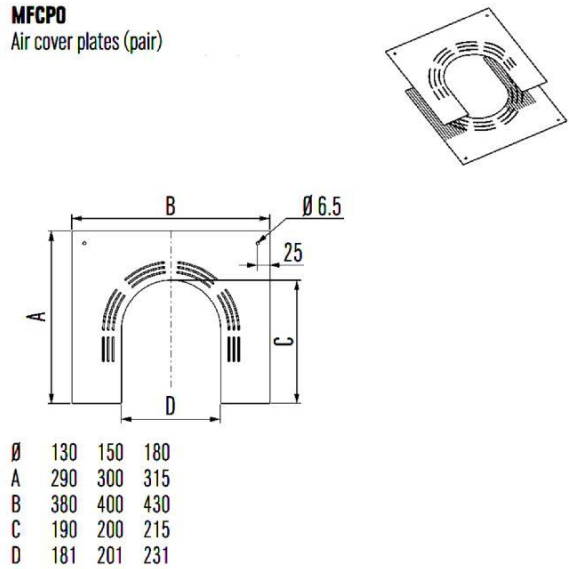
MFE
Cap



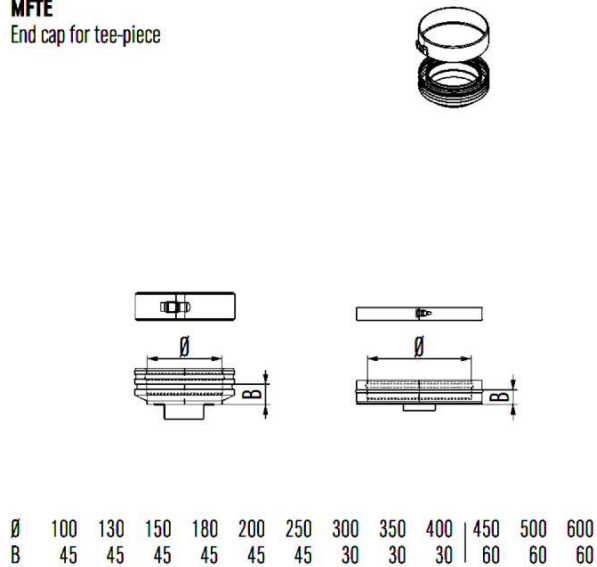
MFCP
Cover plates (pair)



MFCPO
Air cover plates (pair)



MFTE
End cap for tee-piece



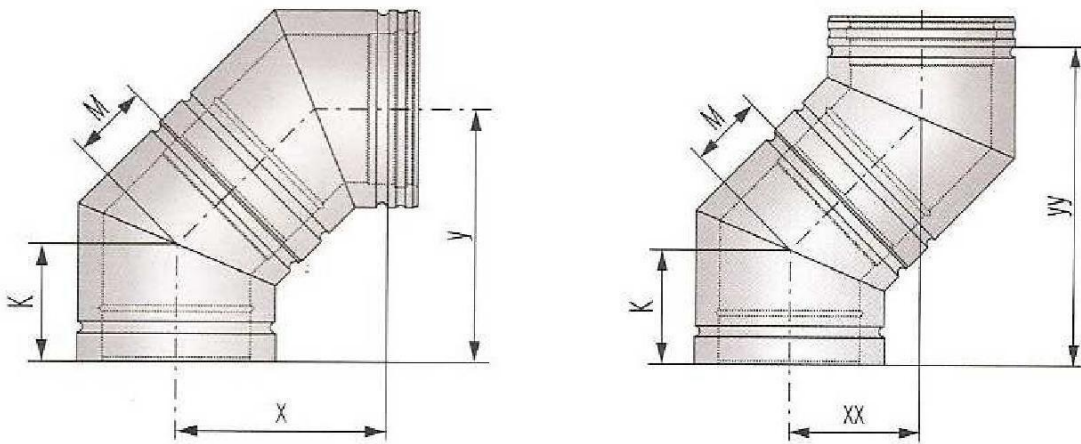
MF-EPDM
Seal EPDM
Temperatures always below 120 degrees



MF-Viton
Seal Viton
for oil-containing exhaust gases

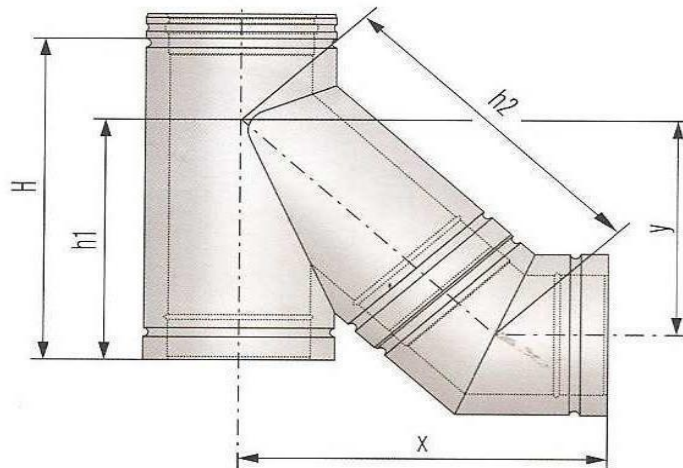


OFFSETS



2 MF 45 DEGREE BEND

Ø	100	130	150	180	200	250	300	350	400
K	90	95	100	105	110	120	145	145	155
M	50	55	60	65	70	80	105	105	115
x	150	165	175	185	200	225	285	285	310
y	185	200	210	225	235	260	320	320	345
xx	100	105	115	120	125	140	175	175	190
yy	240	255	275	290	305	340	425	425	460



MF 45 DEGREE + MF 45 DEGREE

Ø	100	130	180	200	250	300	350	400
h1	400	400	450	500	600	700	750	850
h2	300	300	335	375	450	525	560	625
x	330	365	395	430	505	585	640	715
y	330	355	390	415	475	560	605	660
	235	255	280	305	355	415	455	505

Whilst every effort has been made to provide reliable information and dimension accuracy, Sigram Flue Systems Ltd, do not hold themselves responsible for possible errors of an editorial nature, however caused.

Sigram are committed to the concept of continuous quality and improvement and therefore reserves the right to alter product specification without notice.



**UNIT E2
MEADOWBANK BUSINESS PARK
TWEEDALE WAY
CHADDERTON
OLDHAM, OL9 8EH**

**TEL: 0161 682 1999
FAX: 0161 681 9855
EMAIL: sales@sigram.co.uk
WEB: www.sigram.co.uk**